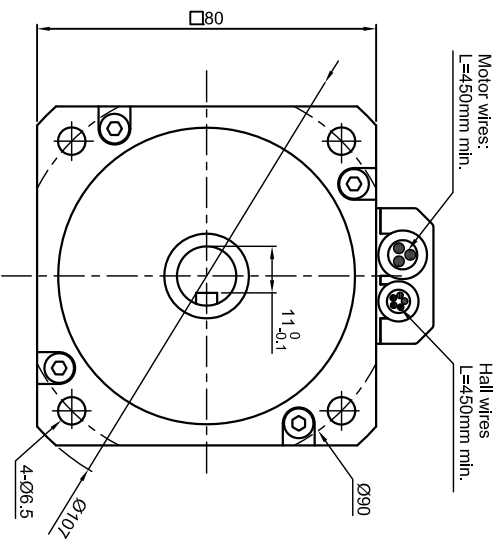
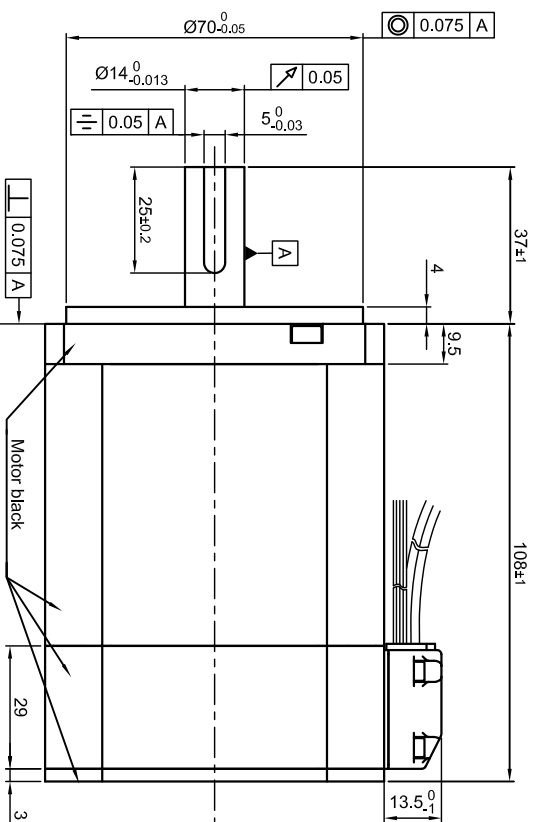


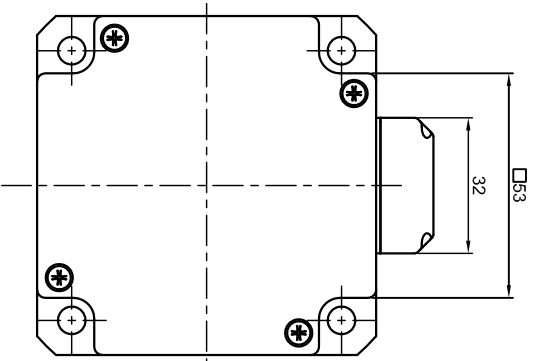
Front view and mounting



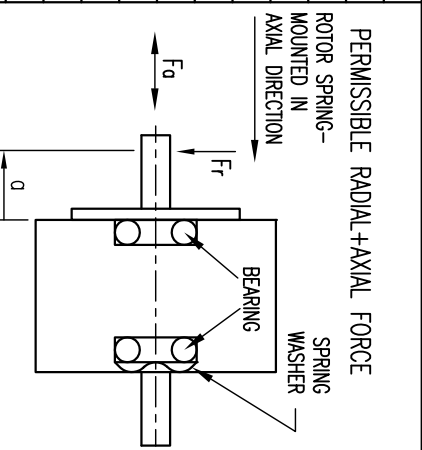
Side view



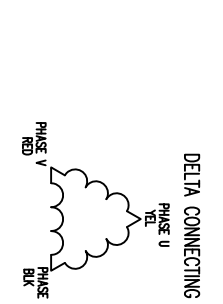
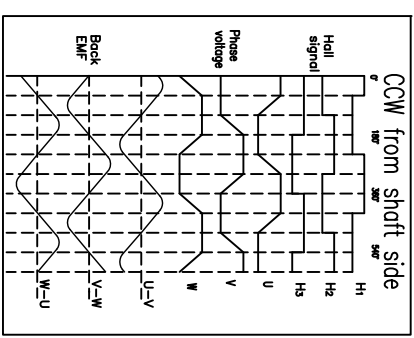
Rear view



| SPECIFICATION  | CONNECTION | DELTA               |
|--|------------|---------------------|
| NO. OF POL./PHASE  |            | 8/3                 |
| VOLTAGE RATED (VDC)  |            | 48                  |
| CURRENT RATED/NO LOAD/PEAK (A)   |            | 14/0.7/40           |
| RESISTANCE/LINE TO LINE (Ohms) @25°C   |            | 0.1±10%             |
| INDUCTANCE/LINE TO LINE (mH) @1KHz   |            | 0.6±20%             |
| TORQUE RATED/PEAK (Nm) [lb-in]   |            | 1.7/5 [15.05/44.25] |
| TORQUE CONSTANT (Nm/A) [lb-in/A]   |            | 0.12 [1.062]        |
| POWER RATED (W)  |            | 534                 |
| SPEED RATED/NO LOAD (RPM)  |            | 3000/4250±10%       |
| ROTOR INERTIA (g·cm <sup>2</sup> )   |            | 1020                |
| WEIGHT (kg) [lb]   |            | 2.14 [4.72]         |
| TEMPERATURE RISE: MAX.80°C   |            |                     |
| AMBIENT TEMPERATURE -10~50°C [14°F ~ 122°F]  |            |                     |
| INSULATION RESISTANCE 100 Mohm (UNDER NORMAL TEMPERATURE AND HUMIDITY)             |            |                     |
| INSULATION CLASS B 130° [266°F]  |            |                     |
| DIELECTRIC STRENGTH 500VAC FOR 1 MIN. (BETWEEN THE MOTOR COILS AND THE MOTOR CASE) |            |                     |
| AMBIENT HUMIDITY MAX. 85% (NO CONDENSATION)  |            |                     |



| WIRING DIAGRAM |          | LEAD GAUGE                           |
|----------------|----------|--------------------------------------|
| COLOR          | FUNCTION | UL3135 AWG14                         |
| YEL            | U        |                                      |
| RED            | V        | SHIELDED, ROUND CABLE AWG 2464 AWG26 |
| BLK            | W        |                                      |
| RED            | 4.5~24V  |                                      |
| BLU            | H1       |                                      |
| GRN            | H2       |                                      |
| WHT            | H3       |                                      |
| BLK            | GND      |                                      |



| PERMISSIBLE RADIAL+AXIAL FORCE | AXIAL FORCE Fa (N) | AXIAL FORCE Fr (N) |
|--------------------------------|--------------------|--------------------|
|                                | 45                 | 20                 |
|                                |                    | 115                |
|                                |                    | AXIAL              |
|                                |                    | RADIAL             |
|                                |                    | 0.025              |
|                                |                    | 0.025              |
|                                |                    | 4.6                |

| REV | DESCRIPTION | DATE     | DRN |
|-----|-------------|----------|-----|
| 1   | NEW WEIGHT  | 05.06.17 | GYQ |
| F   | -           | 11.10.16 | GYQ |
| E   | -           | 26.08.16 | GYQ |

**Nanotec**  
PLUG & DRIVE

DB80M048030-A

| SCALE | FREE | APVD      | S.G. |
|-------|------|-----------|------|
| X     | ±0.5 | CHKD      |      |
| 1PL   | ±0.2 | DRN       | GYQ  |
| 2PL   | ±0.1 | SIGNATURE |      |
| ANGLE | ±30° | DATE      |      |

**BRUSHLESS DC MOTOR**

DWG.NO DB80M048030-A